

BEST SERVICE - BEST VALUE

# WATER 4 LIFE®

Now, with our state-of-the-art inline water treatment system and our exclusive Water 4 Life Program, you can enjoy the benefits of great-tasting, healthy drinking water from the convenience of your own home...for life.

You get the refreshing quality of those expensive spring waters in your own home for only pennies a gallon. If you enroll in the Water 4 Life Program, we will automatically send you filter replacements every 6 months for only \$8.00/month per Filter.\*

\*Texas residents must add 8.25% sales tax

**Once you are enrolled in our Water 4 Life Program, you will never have to worry about remembering when to replace the filter cartridge again. You can choose between making a low monthly payment or prepaying the full amount. You decide what is convenient for you. In six months we will send new replacement cartridges. The Water 4 Life program entitles members to:**

- 20% discount
- Free shipping
- Lifetime warranty
- New cartridges every six months
- Fixed pricing, for life!

The lifetime warranty is full coverage of the unit for as long as you are enrolled in the program. We will replace any part, even if the damage is your fault, for free. All you have to pay is a small shipping and handling charge of US\$9.50. The Water 4 Life Program gives you peace of mind and member savings, and assures that you get healthy water, every day, for life.

## 3 EASY WAYS TO JOIN

Complete the attached form and mail it to:

Aquasana Water 4 Life  
6310 Midway Rd  
Haltom City, TX 76117  
or fax to (817) 536-5286  
or enroll online at:  
[www.aquasana.com/wfl\\_signup.cfm](http://www.aquasana.com/wfl_signup.cfm)

Toll-Free U.S. 1-866-NOBOTTLE  
Toll-Free Canada 1-877-FDAPURE  
[Water4Life@aquasana.com](mailto:Water4Life@aquasana.com)

## 6 Months Limited Warranty

Sun Water Systems warrants the original purchaser-consumer of this product to be free of defects in materials and workmanship. Any defect, malfunction, or other failure of the Product to conform to this warranty will be remedied by the Warrantor in the manner provided below. This Warranty, together with any warranties implied by law, shall be limited to a duration of six (6) months from the original date of purchase by the consumer. This Warranty does not apply to defects that result from abuse, misuse, alteration or damage not caused by Sun Water Systems. THIS WARRANTY DOES NOT COVER, AND IS NOT INTENDED TO EXCLUDE ANY LIABILITY ON THE PART OF WARRANTOR, WHETHER UNDER THIS WARRANTY OR UNDER ANY WARRANTY IMPLIED BY LAW, FOR ANY INDIRECT OR CONSEQUENTIAL DAMAGES FOR BREACH HEREOF OR THEREOF. Note: Some states prohibit limitations on the duration of implied warranties and on the exclusion of indirect or consequential damages; and so the limitation on implied warranties and on incidental and consequential damages may not be applicable to you.

## RESPONSIBILITY OF THE WARRANTOR

Sun Water Systems responsibility under this warranty shall be to repair at its expense, at no charge to the original purchaser-consumer any product that is actually defective, malfunctioning or otherwise covered in this warranty. If Sun Water Systems for any reason cannot repair a Product covered hereby within two (2) weeks after receipt of the original purchaser-consumer's notification of a Warranty claim and the Product, then Sun Water Systems responsibility shall be, at its option, either to replace the defective Product with a comparable new unit at no charge to the consumer or to refund the full purchase price. Sun Water Systems obligations of repair, replacement, or refund are conditioned upon the return of the defective product to Sun Water Systems. If any product hereby is actually defective within the terms of this Warranty, then Sun Water Systems will bear all the reasonable and proper shipping and mailing charges actually incurred in the consumer's return of the Product set forth herein. If the Product proves not to be defective within the terms of this Warranty, then all costs and expenses in connection with the processing of the consumer's claim hereunder shall be borne by consumer.

## RESPONSIBILITY OF THE CONSUMER

The original purchaser-consumer's sole responsibility in the instance of a warranty claim shall be to notify Sun Water Systems of the defect, malfunction under which the terms of this Warranty are violated. You may secure performance or obligations hereunder by (in writing):

1. Identifying the Product involved (by model or serial number or other sufficient description that will allow Warrantor to determine which product is defective).
2. Specifying where, when and from whom the Product was purchased.
3. Describing the nature of the defect, malfunction covered under the Warranty.
4. Return the Product, with the above information to:  
Sun Water Systems  
6310 Midway Rd.  
Haltom City, TX 76117

THIS WARRANTY GIVES YOU SPECIFIC LEGAL RIGHTS AND YOU MAY ALSO HAVE OTHER RIGHTS, WHICH VARY FROM STATE TO STATE.

Specifications  
Model: AQ-7000  
Min./Max. Temperature: 40- 90 F  
Min/Max. Operating Pressure: 20-100 psi  
Flow Rate: 0.375 GPM  
Capacity: 300 Gallons



## Installation Instructions

**AQ-7000** In-Line Refrigerator & Fountain Filtration System

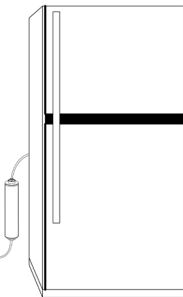
## INSTALLATION, USE & CARE GUIDE

### Parts and Material Included

- A. Filter Cartridge.
- B. Adjustable plastic strap.
- C. Installation instructions.

### Tools & Parts Needed

- Gather the required tools before starting installation. Read and follow the instructions provided with any tools listed here.
- A. Tube Cutter or Utility Knife
  - B. Bucket for flushing filter.



## INSTALLATION REQUIREMENTS

Install in a location that is not susceptible to freezing temperatures as damage to the housing could occur.

Install away from direct sunlight as prolonged exposure to light can weaken plastic components.

A water supply line must be run to the refrigerator or fountain prior to installation of this filter.

**1 Turn off** water supply to refrigerator

**2 Locate** an easily accessible section of refrigerator water supply tubing or supply line to refrigerator from under-sink.



**3 If installing on the back of a refrigerator;** cut and remove a 11.5" section of refrigerator water supply tubing. Use a tube cutter for copper tubing and a utility knife for plastic tubing. Make sure ends are square and free from nicks and deep scratches. (See Figure 1).



Figure 1

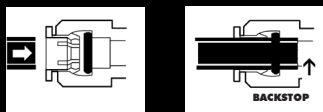
**4 Referring to "Using Push-In Fittings"** section below, insert refrigerator water supply tubing into inlet push-in fitting on filter(see Figure 2).



Figure 2

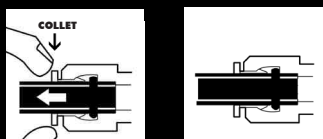
**Using Push-In Fittings To Attach Tubing**

Push tubing in as far as it will go. Tubing must be inserted past o-ring and hit backstop. Pull tube to ensure it is secured.



**To Release Tubing**

Push in grey collet to release tubing. With collet held, pull tubing straight out.



**5 Turn on** the incoming water supply and flush the filter into a bucket. Run water for 2-3 minutes to flush out air. The initial surge of water may be discolored due to carbon fines (See Figure 3).

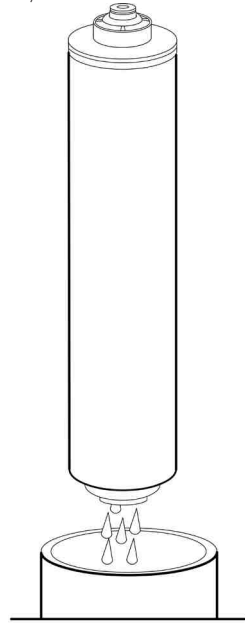


Figure 3

**6 Shut off water** supply again. Referring to "Using Push-In Fittings" section, insert water supply tube from refrigerator into outlet fitting (see Figure 4).

**7 Use plastic strap** to secure filter to back of refrigerator or undersink.

**8 Turn on water supply** to refrigerator and check for leaks.



Figure 4

**FILTER REPLACEMENT**

The contaminants or other substances removed or reduced by this water filter are not necessarily in all user's water. Filter life varies depending on local water conditions and the volume of water used. We recommend that you change your filter every 6 months. However, it can be replaced earlier if there is a drop in flow rate at the refrigerator's water dispenser (if present) or if the icemaker's performance deteriorates.

Do not use with water that is microbiologically unsafe or of unknown quality without adequate disinfection before or after the system.

**FILTER REPLACEMENT INSTRUCTIONS**

1. Turn off water supply to refrigerator.
2. Referring to section "Using Push-In Fitting", release tubing from both ends of filter.
3. Referring to "Using Push-In Fittings" section, insert refrigerator water supply tubing into inlet push-in fitting on filter.
4. Turn on the incoming water supply and flush the filter into a bucket. Run water for 2-3 minutes to flush out air.
5. Shut off water supply again. Referring to "Using Push-In Fittings" section, insert water supply tube from refrigerator into outlet fitting.
6. Turn on water supply to refrigerator and check for leaks.

**TROUBLESHOOTING GUIDE**

Water leaks at Push-in Connections: Push tubing in as far as it will go. If leaking continues, shut off water at the original valve and remove water line by pushing in on the connector collar while pulling the tubing away. See, "Using Push-In Fitting" section. Inspect tubing for cracks and scratches. If tubing is cracked or scratched, simply cut that portion away and reinsert new end of tubing into fitting. Make sure tubing is cut straight. If not, re-cut.

**CONTACT**

Contact customer service toll free in the U.S.A. And Canada  
**1-866-NO-BOTTLE(662-6885)**  
 Monday through Friday 7:00 a.m to 7:00 p.m (CST) Saturday, 10:00 a.m. to 2 p.m (CST) or write us at:

Sun Water Systems  
 Customer Experience Center  
 6310 Midway Road  
 Haltom City, TX. 76117

Please include a daytime phone number in your correspondence.

BEST SERVICE, BEST VALUE!

**WATER 4 LIFE®**

**AUTO-SHIP REPLACEMENT PROGRAM**

**Enroll Me Now!**

Name \_\_\_\_\_

Address \_\_\_\_\_

City \_\_\_\_\_ St/Prov \_\_\_\_\_ Zip \_\_\_\_\_

Email \_\_\_\_\_

Phone \_\_\_\_\_

Credit Card Type \_\_\_\_\_ Expiration Date \_\_\_\_/\_\_\_\_/\_\_\_\_

Credit Card # \_\_\_\_\_

Signature \_\_\_\_\_ Date \_\_\_\_\_

Date Purchased \_\_\_\_/\_\_\_\_/\_\_\_\_

Additional Shipping Charges apply for Canada, Hawaii, Alaska.  
 TX residents must pay an additional 8.25% sales tax.

Continental U. S.

Quantity	Item	Amount
_____	Inline cartridge @ \$8.00 (U.S.) monthly	_____
_____	Inline cartridge @ \$48.00 (U.S.) prepay*	_____
	TX Residents add 8.25% sales tax (\$8.66 or \$51.96)	

Canada, Hawaii and Alaska

Quantity	Item	Amount
_____	Inline cartridge @ \$8.50 (U.S.) monthly	_____
_____	Inline cartridge @ \$51.00 (U.S.) prepay *	_____
	Total	_____

If you wish to prepay by check or money order, complete this form and return with payment for each filter cartridge. New cartridge(s) will arrive pre-paid 6 months later with an invoice for the next 6 month cycle and a pre-paid envelope to continue enrollment.

Please complete this form and return it to enroll in the Water 4 Life Program. This is not a contract, you may cancel your membership at any time.

\* Your card will be charged now for the cartridge(s) that will be shipped in 6 months. If you did not just purchase the filtration system, please enter the date it was purchased or the last date the filters were replaced. We will send the filters 6 months from the date that you enter.